

LAS VEGAS APP CON
125.025 379.15
LAS VEGAS TOWER
118.75 257.8 (Rwy 1L/19R, 1R/19L)
119.9 257.8 (Rwy 7L/25R, 7R/25L)
NORTH LAS VEGAS TOWER*
125.7 360.75
LAS VEGAS ATIS
132.4
NORTH LAS VEGAS ATIS
118.05

MILFORD
112.1 MLF
Chan 58
N38°21.62' - W113°00.79'
L-5, H-3

BRYCE CANYON
112.8 BCE
Chan 75
N37°41.35' - W112°18.23'
L-5, H-3

DOVE CREEK
114.6 DVC
Chan 93
N37°48.53' - W108°55.88'
L-5, H-3

MORMON MESA
114.3 MMM
Chan 90

HOLDM
N36°49.12' - W113°32.68'

FL250
239°
(177)

LUXOR
N36°23.69' - W114°28.83'
Turbojets cross at
12000' at 250K

KSINO
N36°34.54' - W114°05.08'

BETHL
N36°53.07' - W112°26.43'

PAGE
117.6 PGA
Chan 123

LOCALIZER 110.3
I-LAS
Chan 40

NORTH LAS VEGAS

BAMAA
N36°08.04' - W114°43.89'
Cross at 8000'
at 210K

LOCALIZER 111.75
I-RLE

MCCARRAN INTL
HENDERSON EXECUTIVE

BOULDER CITY MUNI

BOULDER CITY
116.7 BLD
Chan 114
N35°59.75' - W114°51.82'

LAS VEGAS
116.9 LAS
Chan 116

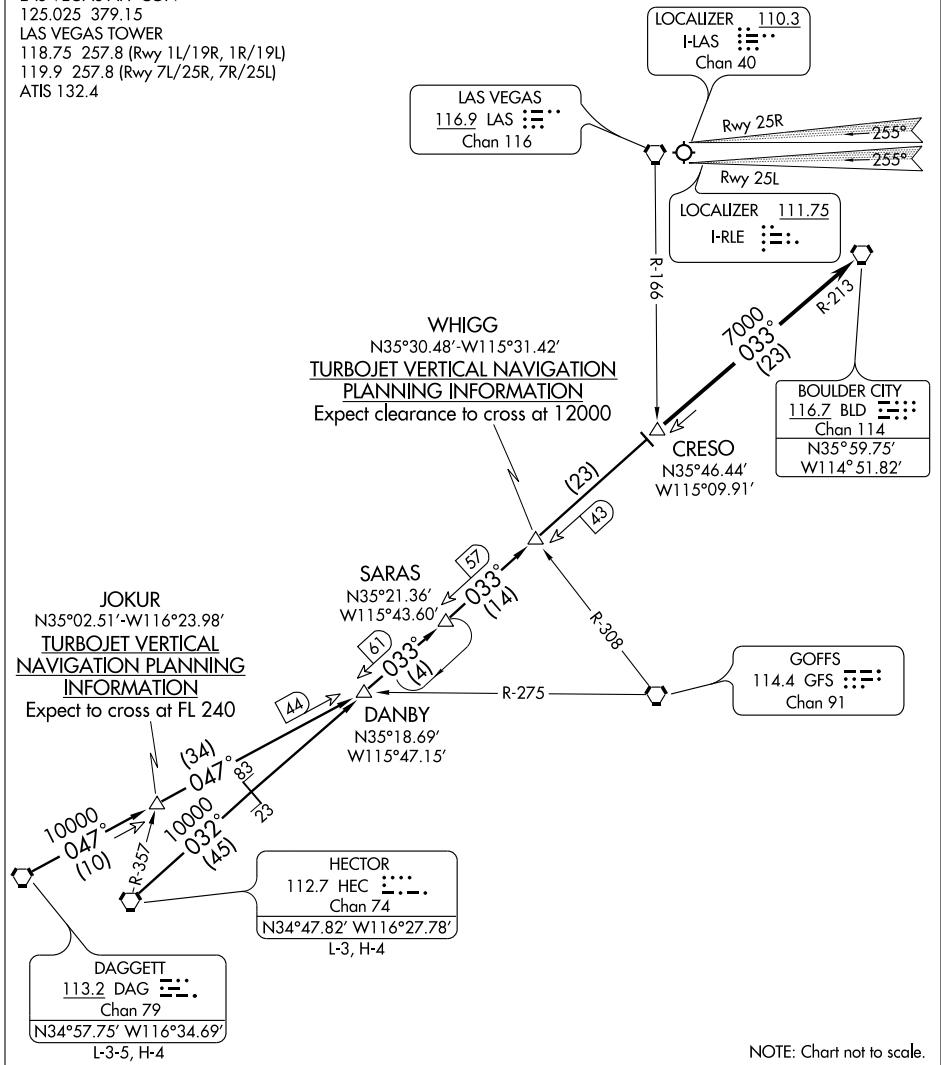


NOTE: RADAR and DME REQUIRED.

NOTE: Chart not to scale.

CRESO THREE ARRIVAL

LAS VEGAS APP CON
125.025 379.15
LAS VEGAS TOWER
118.75 257.8 (Rwy 1L/19R, 1R/19L)
119.9 257.8 (Rwy 7L/25R, 7R/25L)
ATIS 132.4



SW-4, 21 DEC 2006 to 18 JAN 2007

SW-4, 21 DEC 2006 to 18 JAN 2007

NOTE: Chart not to scale.

DAGGETT TRANSITION (DAG.CRESO3): From over DAG VORTAC via DAG R-047 and BLD R-213 to CRESO INT/DME, thence....

HECTOR TRANSITION (HEC.CRESO3): From over HEC VORTAC via HEC R-032 and BLD R-213 to CRESO INT/DME, Thence....

....From over CRESO INT/DME via BLD R-213 to BLD VORTAC. Runways 1, 7 and 19 expect vectors to final approach course. From BLD VORTAC, expect ILS approach Runway 25L.


CRESO THREE ARRIVAL

FUZZY SEVEN ARRIVAL

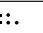
ST-662 (FAA)

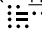
LAS VEGAS, NEVADA

LAS VEGAS APP CON
 125.025 379.15
 LAS VEGAS TOWER
 118.75 257.8 (Rwy 1L/19R, 1R/19L)
 119.9 257.8 (Rwy 7L/25R, 7R/25L)
 NORTH LAS VEGAS TOWER*
 125.7 360.75
 LAS VEGAS ATIS
 132.4
 NORTH LAS VEGAS ATIS
 118.05

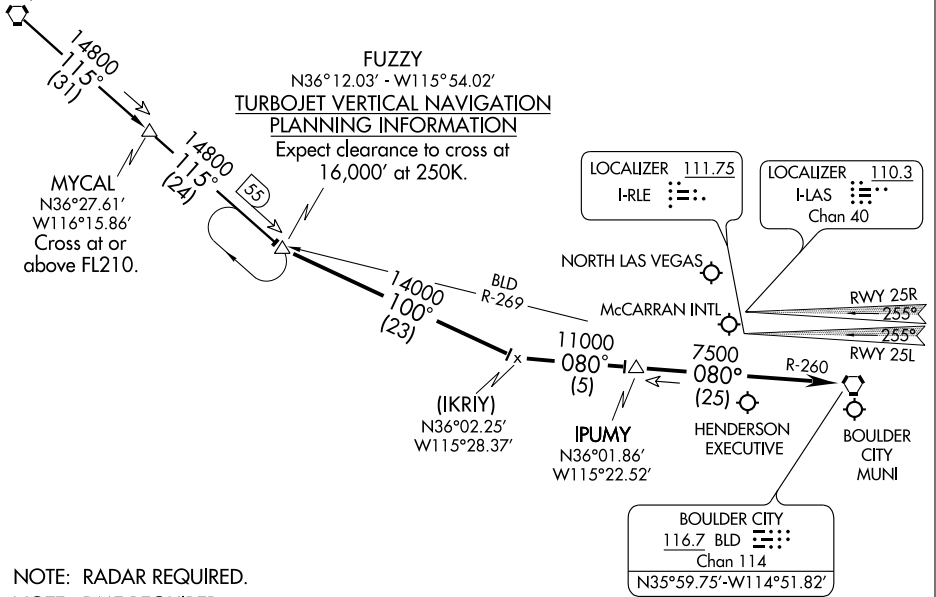
BEATTY
 114.7 BTY 
 Chan 94
 N36°48.04'-W116°44.86'
 L-5, H-4

FUZZY
 N36°12.03' - W115°54.02'
TURBOJET VERTICAL NAVIGATION
PLANNING INFORMATION
 Expect clearance to cross at
 16,000' at 250K.

LOCALIZER 111.75
 I-RLE 

LOCALIZER 110.3
 I-LAS 
 Chan 40

MYCAL
 N36°27.61'
 W116°15.86'
 Cross at or
 above FL210.



SW-4, 21 DEC 2006 to 18 JAN 2007

SW-4, 21 DEC 2006 to 18 JAN 2007

NOTE: RADAR REQUIRED.
 NOTE: DME REQUIRED.
 NOTE: Chart not to scale.

BEATTY TRANSITION (BTY.FUZZY7): From over BTY VORTAC via BTY R-115 to FUZZY INT. Thence . . .
 . . . From over FUZZY via heading 100° to intercept BLD R-260 to BLD VORTAC.

LANDING McCARRAN INTL RWYS 1L/R, 7L/R, and 19L/R: Expect vectors for visual approach prior to BLD VORTAC.

LANDING McCARRAN INTL RWYS 25L/R: Expect ILS approach.

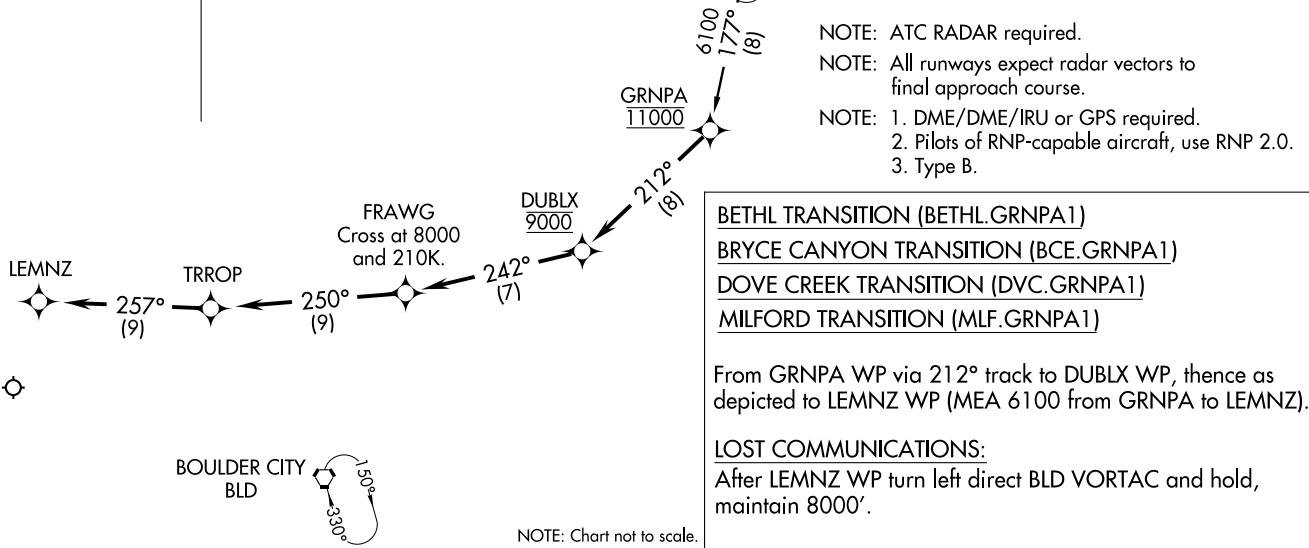
LANDING NORTH LAS VEGAS, HENDERSON EXECUTIVE, and BOULDER CITY MUNI :
 After IPUMY, expect radar vectors to airport.

FUZZY SEVEN ARRIVAL

LAS VEGAS, NEVADA

GRNPA ONE ARRIVAL (RNAV)
 (GRNPA.GRNPA1) 05356

ATIS 132.4
 LAS VEGAS APP CON
 125.025 379.15
 LAS VEGAS TOWER
 118.75 257.8 (Rwy 1L/19R, 1R/19L)
 119.9 257.8 (Rwy 7L/25R, 7R/25L)
 GND CON
 121.1 270.8 E of 1R/19L
 121.9 254.3 W of 1R/19L



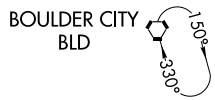
- NOTE: ATC RADAR required.
 NOTE: All runways expect radar vectors to final approach course.
 NOTE: 1. DME/DME/IRU or GPS required.
 2. Pilots of RNP-capable aircraft, use RNP 2.0.
 3. Type B.

BETHL TRANSITION (BETHL.GRNPA1)
BRYCE CANYON TRANSITION (BCE.GRNPA1)
DOVE CREEK TRANSITION (DVC.GRNPA1)
MILFORD TRANSITION (MLF.GRNPA1)

From GRNPA WP via 212° track to DUBLX WP, thence as depicted to LEMNZ WP (MEA 6100 from GRNPA to LEMNZ).

LOST COMMUNICATIONS:
 After LEMNZ WP turn left direct BLD VORTAC and hold, maintain 8000'.

LAS VEGAS, NEVADA
 MCCARRAN INTL



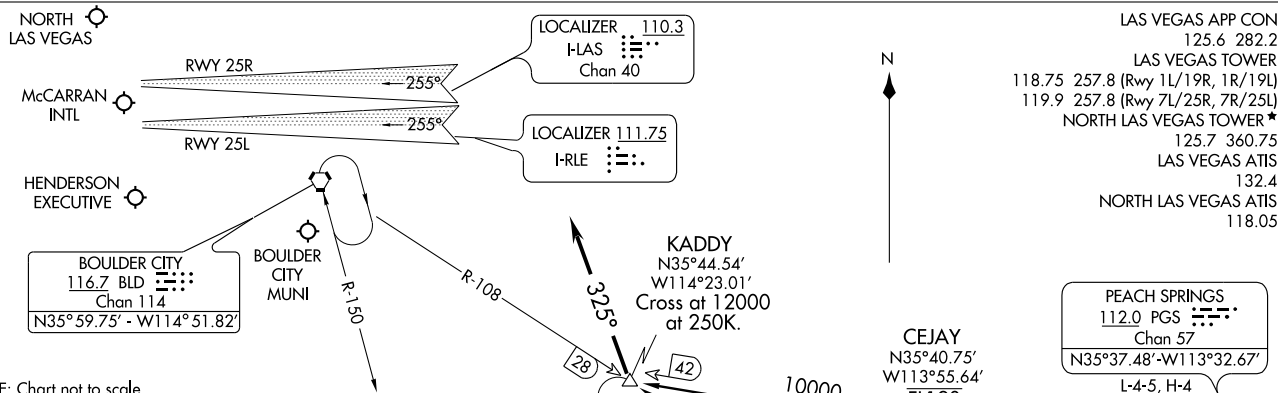
(GRNPA.GRNPA1) 05356
 GRNPA ONE ARRIVAL (RNAV)

ST-662 (FAA)

MCCARRAN INTL
 LAS VEGAS, NEVADA

KADDY ONE ARRIVAL
(KADDY.KADDY1) 06271

KADDY ONE ARRIVAL
(KADDY.KADDY1) 06271



LAS VEGAS APP CON
125.6 282.2
LAS VEGAS TOWER
118.75 257.8 (Rwy 1L/19R, 1R/19L)
119.9 257.8 (Rwy 7L/25R, 7R/25L)
NORTH LAS VEGAS TOWER *
125.7 360.75
LAS VEGAS ATIS
132.4
NORTH LAS VEGAS ATIS
118.05

BOULDER CITY BLD
116.7 BLD
Chan 114
N35°59.75' - W114°51.82'

LOCALIZER 110.3
I-LAS
Chan 40

LOCALIZER 111.75
I-RLE

PEACH SPRINGS
112.0 PGS
Chan 57
N35°37.48' - W113°32.67'

KINGMAN
108.8 IGM
Chan 25
N35°15.63'
W113°56.05'

DRAKE
114.1 DRK
Chan 88
N34°42.15' - W112°28.82'

NOTE: Chart not to scale.
NOTE: RADAR and DME REQUIRED

DRAKE TRANSITION (DRK.KADDY1): From over DRK VORTAC via DRK R-281 and IGM R-100 to IGM VOR/DME, then via IGM R-320 and BLD R-108 to KADDY INT. Thence....

KINGMAN TRANSITION (IGM.KADDY1): From over IGM VOR/DME via IGM R-320 and BLD R-108 to KADDY INT. Thence....

PEACH SPRINGS TRANSITION (PGS.KADDY1): From over PGS VORTAC via PGS R-265 to KADDY INT. Thence....

....After KADDY INT fly heading 325°. Thence....

McCARRAN INTL: All runways expect radar vectors to final approach course.

NORTH LAS VEGAS, HENDERSON EXECUTIVE, and BOULDER CITY MUNI: Expect radar vectors to airport.

LOST COMMUNICATIONS: After KADDY INT proceed direct BLD VORTAC and hold. Maintain 8000' or last assigned altitude whichever is higher.

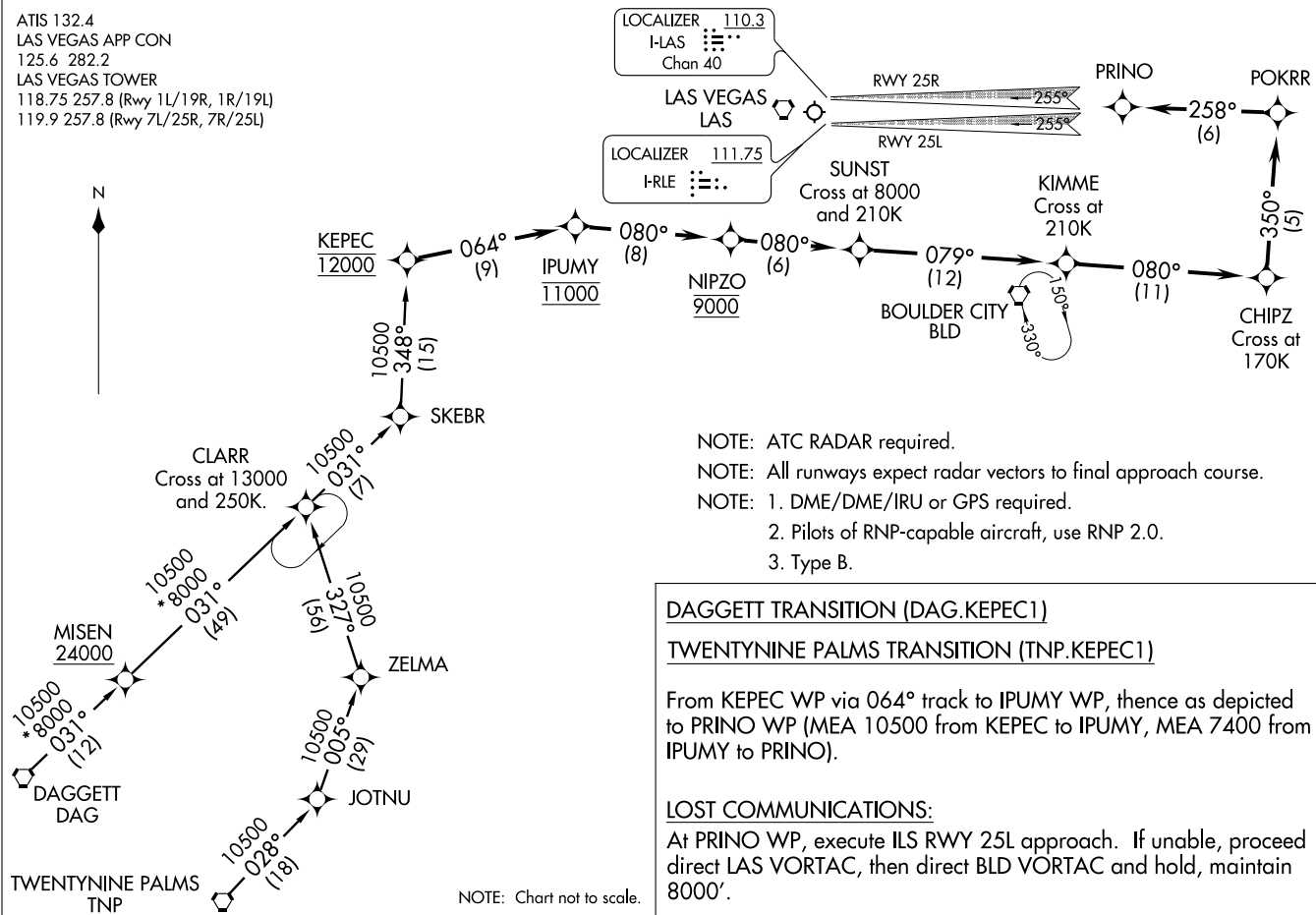
ST-662 (FAA)

LAS VEGAS, NEVADA

LAS VEGAS, NEVADA

KEPEC ONE ARRIVAL (RNAV)
(KEPEC, KEPEC1) 05244

ATIS 132.4
LAS VEGAS APP CON
125.6 282.2
LAS VEGAS TOWER
118.75 257.8 (Rwy 1L/19R, 1R/19L)
119.9 257.8 (Rwy 7L/25R, 7R/25L)



LOCALIZER 110.3
I-LAS
Chan 40

LAS VEGAS LAS

LOCALIZER 111.75
I-RLE

- NOTE: ATC RADAR required.
NOTE: All runways expect radar vectors to final approach course.
NOTE: 1. DME/DME/IRU or GPS required.
2. Pilots of RNP-capable aircraft, use RNP 2.0.
3. Type B.

DAGGETT TRANSITION (DAG.KEPEC1)
TWENTYNINE PALMS TRANSITION (TNP.KEPEC1)

From KEPEC WP via 064° track to IPUMY WP, thence as depicted to PRINO WP (MEA 10500 from KEPEC to IPUMY, MEA 7400 from IPUMY to PRINO).

LOST COMMUNICATIONS:
At PRINO WP, execute ILS RWY 25L approach. If unable, proceed direct LAS VORTAC, then direct BLD VORTAC and hold, maintain 8000'.

NOTE: Chart not to scale.

LAS VEGAS, NEVADA
MCCARRAN INTL

(KEPEC, KEPEC1) 05244
KEPEC ONE ARRIVAL (RNAV)

ST-662 (FAA)

MCCARRAN INTL
LAS VEGAS, NEVADA

ARRIVAL DESCRIPTION

BETHL TRANSITION (BETHL.LUXOR2): From over BETHL INT via PGA R-254 and MMM R-069 to HOLDM INT, then via LAS R-045 to LUXOR INT. Thence. . . .

BRYCE CANYON TRANSITION (BCE.LUXOR2): From over BCE VORTAC via BCE R-218 and LAS R-045 to LUXOR INT. Thence. . . .

DOVE CREEK TRANSITION (DVC.LUXOR2): From over DVC VORTAC via DVC R-239 and LAS R-054 to BETHL INT, then via PGA R-254 and MMM R-069 to HOLDM INT, then via LAS R-045 to LUXOR INT. Thence. . . .

MILFORD TRANSITION (MLF.LUXOR2): From over MLF VORTAC via MLF R-190 and LAS R-045 to LUXOR INT. Thence. . . .

. . . .From over LUXOR INT via BLD R-023 to BAMAA INT, thence via LAS R-066 to LAS VORTAC. Thence. . . .

LANDING McCARRAN INTL: All runways expect radar vectors to final approach course.

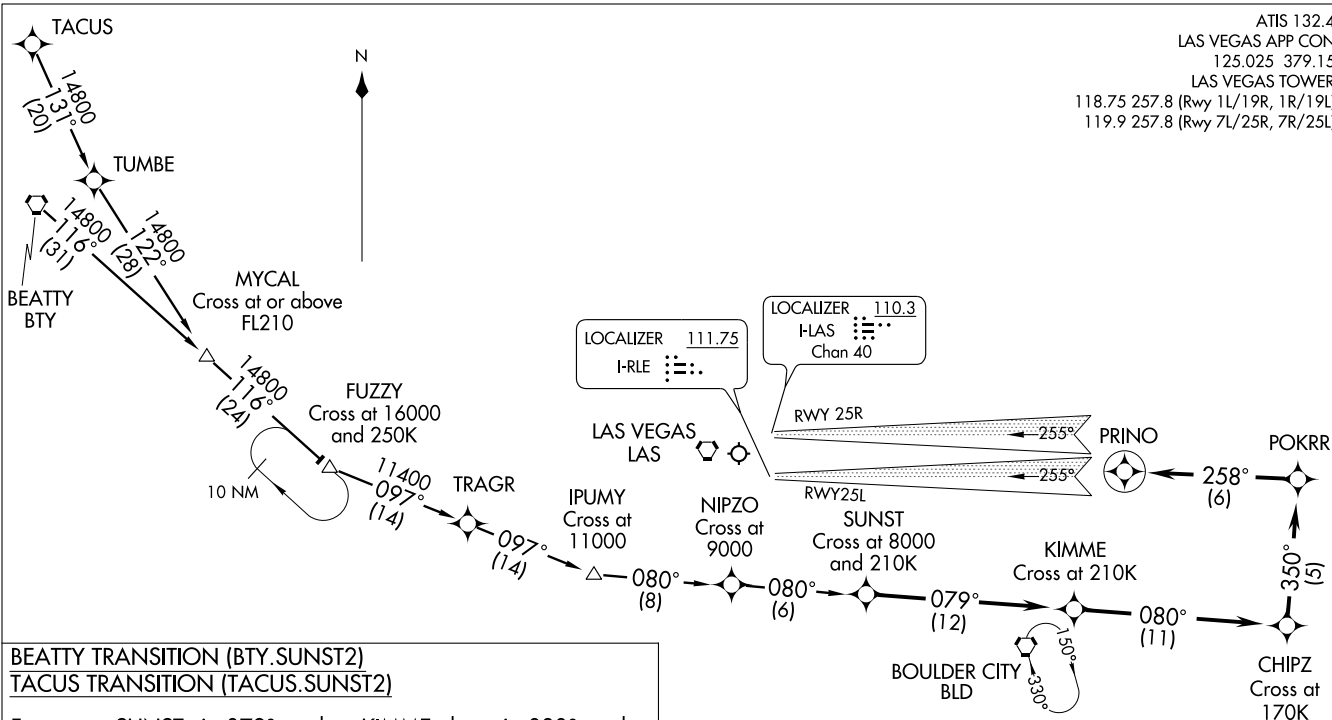
LANDING NORTH LAS VEGAS, HENDERSON EXECUTIVE, and BOULDER CITY MUNI: Expect radar vectors to airport.

LOST COMMUNICATIONS: After LAS VORTAC proceed direct BLD VORTAC and hold. Maintain 8000' or last assigned altitude whichever is higher.

SW-4, 21 DEC 2006 to 18 JAN 2007

SW-4, 21 DEC 2006 to 18 JAN 2007

SUNST TWO ARRIVAL (RNAV)
(SUNST.SUNST2) 06327



ATIS 132.4
LAS VEGAS APP CON 125.025 379.15
LAS VEGAS TOWER 118.75 257.8 (Rwy 1L/19R, 1R/19L)
119.9 257.8 (Rwy 7L/25R, 7R/25L)

(SUNST.SUNST2) 06327
SUNST TWO ARRIVAL (RNAV)

ST-662 (FAA)

MCCARRAN INTL
LAS VEGAS, NEVADA

BEATTY TRANSITION (BTY.SUNST2)
TACUS TRANSITION (TACUS.SUNST2)

From over SUNST via 079° track to KIMME, then via 080° track to CHIPZ, then left turn via 350° track to POKRR, then left turn via 258° track to PRINO. Expect radar vectors to final approach course.

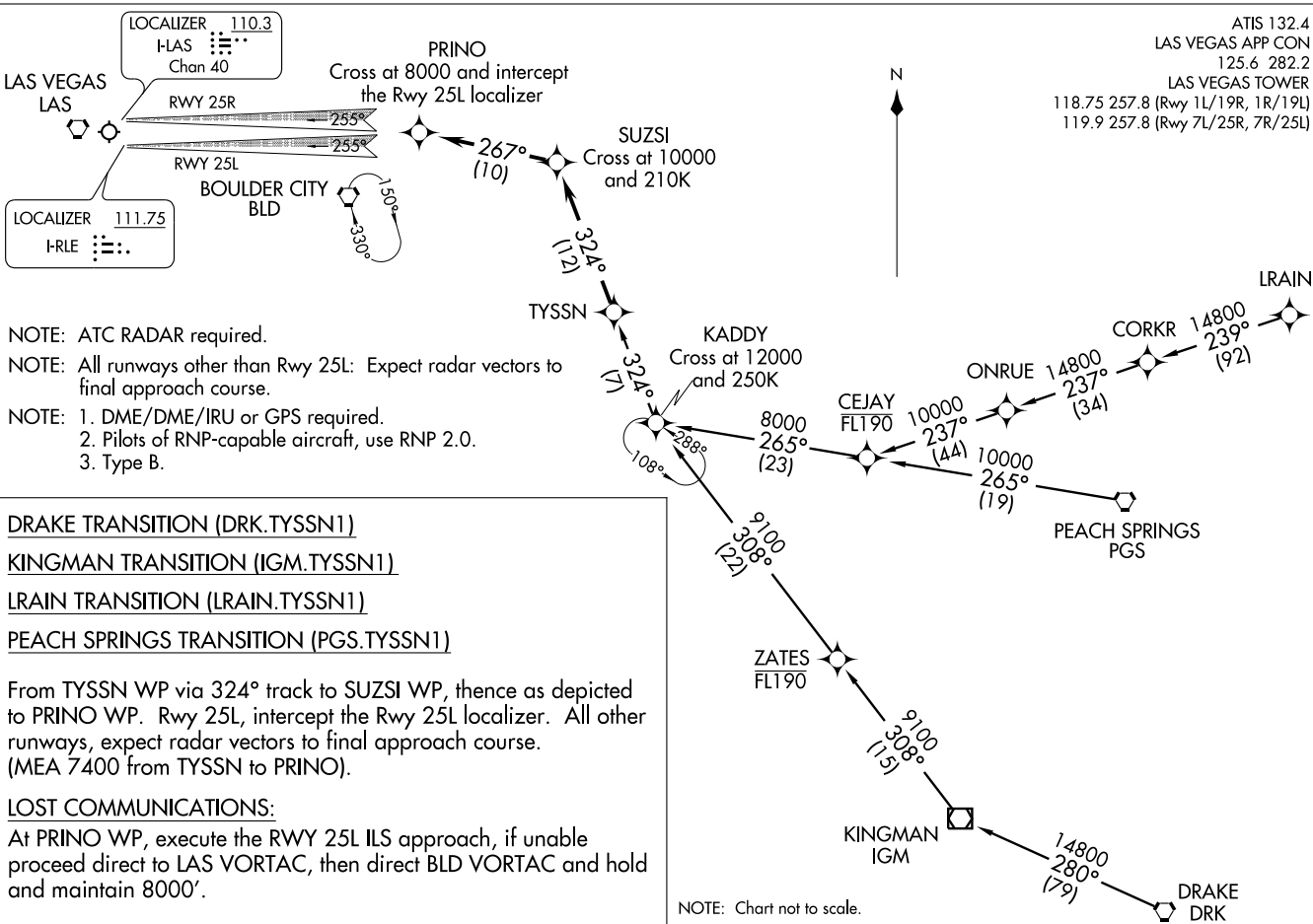
LOST COMMUNICATIONS
At PRINO execute Rwy 25L ILS approach, if unable proceed direct to LAS VORTAC, then direct BLD VORTAC and hold, maintain 8000'.

- NOTE: RADAR required.
- NOTE: All runways expect radar vectors to final approach.
- NOTE: DME/DME/IRU, or GPS required.
- NOTE: Pilots of RNP-capable aircraft use RNP 2.0.
- NOTE: Type B.
- NOTE: Chart not to scale.

LAS VEGAS, NEVADA
MCCARRAN INTL

(TYSSN.TYSSN1) 05244

TYSSN ONE ARRIVAL (RNAV)



ATIS 132.4
 LAS VEGAS APP CON
 125.6 282.2
 LAS VEGAS TOWER
 118.75 257.8 (Rwy 1L/19R, 1R/19L)
 119.9 257.8 (Rwy 7L/25R, 7R/25L)

TYSSN ONE ARRIVAL (RNAV)

ST-662 (FAA)

MCCARRAN INTL
 LAS VEGAS, NEVADA

LAS VEGAS, NEVADA
 MCCARRAN INTL

CLARR TWO ARRIVAL

ST-662 (FAA)

LAS VEGAS, NEVADA

LAS VEGAS APP CON
 125.025 282.2
 LAS VEGAS TOWER
 118.75 257.8 (Rwy 1L/19R, 1R/19L)
 119.9 257.8 (Rwy 7L/25R, 7R/25L)
 NORTH LAS VEGAS TOWER*
 125.7 360.75
 LAS VEGAS ATIS
 132.4
 NORTH LAS VEGAS ATIS
 118.05

LOCALIZER 110.3
 I-LAS
 Chan 40

LAS VEGAS
 116.9 LAS
 Chan 116

NORTH LAS VEGAS

LOCALIZER 111.75
 I-RLE

RWY 25R
 255°
 RWY 25L

(ISSAR)
 N36°02.66'
 W115°34.53'

IPUMY
 N36°01.86'
 W115°22.52'

McCARRAN INTL

BEATTY
 114.7 BTY
 Chan 94

BOULDER CITY
 116.7 BLD
 Chan 114
 N35°59.75'-W114°51.82'

HENDERSON EXECUTIVE

R-260

BOULDER CITY MUNI

SKEBR
 N35°45.43'
 W115°34.53'

CLARR
 N35°40.54'
 W115°40.79'
 Cross at 13000
 at 250K.

GOFFS
 114.4 GFS
 Chan 91
 N35°07.87'
 W115°10.59'

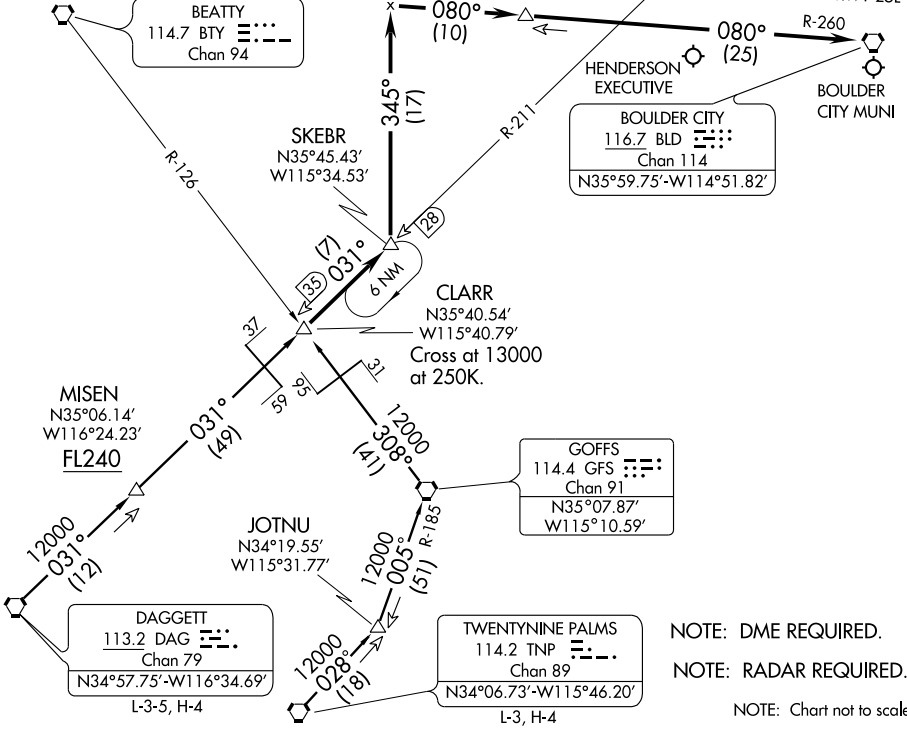
MISEN
 N35°06.14'
 W116°24.23'
 FL240

JOTNU
 N34°19.55'
 W115°31.77'

DAGGETT
 113.2 DAG
 Chan 79
 N34°57.75'-W116°34.69'

TWENTYNINE PALMS
 114.2 TNP
 Chan 89
 N34°06.73'-W115°46.20'

NOTE: DME REQUIRED.
 NOTE: RADAR REQUIRED.
 NOTE: Chart not to scale.



SW-4, 21 DEC 2006 to 18 JAN 2007

SW-4, 21 DEC 2006 to 18 JAN 2007

DAGGETT TRANSITION (DAG.CLARR2): From over DAG VORTAC via DAG R-031 and LAS R-211 to CLARR INT. Thence. . .

TWENTYNINE PALMS TRANSITION (TNP.CLARR2): From over TNP VORTAC via TNP R-028 to JOTNU INT, then via GFS R-185 to GFS VORTAC, then via GFS R-308 and BTY R-126 to CLARR INT. Thence. . .

...From over CLARR INT via LAS R-211 to SKEBR INT. Thence. . .

LANDING McCARRAN INTL: Via heading 345° to intercept the BLD R-260 to BLD VORTAC. Rws 1L/R, 7L/R, and 19L/R expect radar vectors for visual approach prior to BLD VORTAC. Rws 25L/R expect ILS approach procedure.

LANDING NORTH LAS VEGAS, HENDERSON EXECUTIVE, and BOULDER CITY MUNI: After SKEBR INT expect radar vectors to airport.

CLARR TWO ARRIVAL